

# **Brock University**

FTE Enrolment, 2008-2009

---

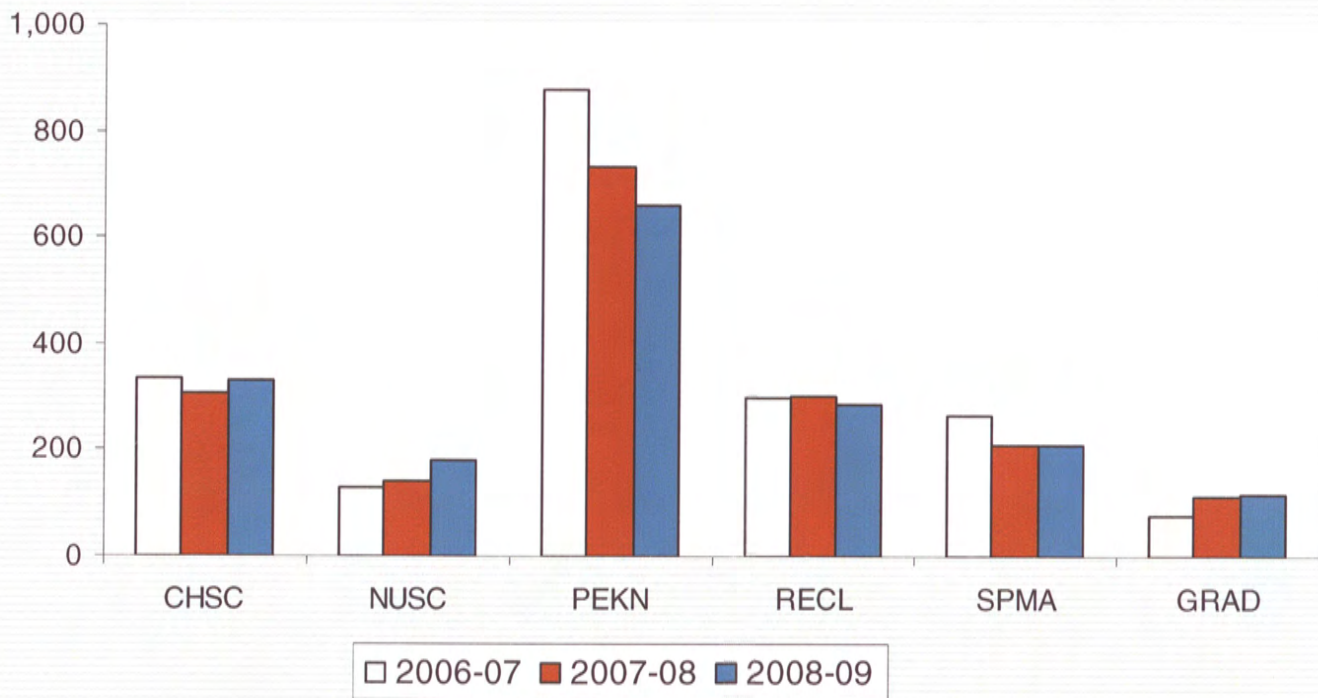
## **Faculty of Applied Health Sciences**



# Faculty of Applied Health Sciences

## FTE Enrolment, 2006-07 to 2008-09

---





FULL-TIME EQUIVALENT (FTE) ENROLMENT: THREE-YEAR SUMMARY  
**FACULTY OF APPLIED HEALTH SCIENCES**

(Data include ALL sections and ALL enrolment in ALL sessions)

**A. UNDERGRADUATE COURSE ENROLMENTS**

	2006-07					2007-08					2008-09				
	Fall/Winter			Spring/ Summer	All Sessions	Fall/Winter			Spring/ Summer	All Sessions	Fall/Winter			Spring/ Summer	All Sessions
	Nov. 1st	Feb. 1st	Sub-Total			Nov. 1st	Feb. 1st	Sub-Total			Nov. 1st	Feb. 1st	Sub-Total		
Year I	1,239	1,576	1,407.5	10.5	<b>1,418.0</b>	1,058	1,810	1,434.0	0.0	<b>1,434.0</b>	1,211	1,828	1,519.5	34.5	<b>1,554.0</b>
Year II	3,568	2,542	3,055.0	58.5	<b>3,113.5</b>	3,121	2,279	2,700.0	22.5	<b>2,722.5</b>	2,907	2,830	2,868.5	43.5	<b>2,912.0</b>
Year III	2,778	3,469	3,095.0	119.0	<b>3,214.0</b>	2,421	2,619	2,510.0	62.0	<b>2,572.0</b>	2,284	2,294	2,279.8	101.5	<b>2,381.3</b>
Year IV	1,507	1,652	1,665.0	115.0	<b>1,780.0</b>	1,464	1,552	1,587.5	143.5	<b>1,731.0</b>	1,332	1,246	1,356.0	134.5	<b>1,490.5</b>
Total	9,092	9,239	9,222.5	303.0	<b>9,525.5</b>	8,064	8,260	8,231.5	228.0	<b>8,459.5</b>	7,734	8,198	8,023.8	314.0	<b>8,337.8</b>

**B. AVERAGE CLASS/SECTION SIZES**

	Fall/Winter		Spring/Summer		Average All Sessions	Fall/Winter		Spring/Summer		Average All Sessions	Fall/Winter		Spring/Summer		Average All Sessions
	Sections	Ave.	Sections	Ave.		Sections	Ave.	Sections	Ave.		Sections	Ave.	Sections	Ave.	
Year I	8.0	175.9	0.5	21.0	<b>166.8</b>	8.0	179.3	0.0	#DIV/0!	<b>179.3</b>	8.5	178.8	0.5	69.0	<b>172.7</b>
Year II	33.5	91.2	1.5	39.0	<b>89.0</b>	32.0	84.4	1.0	22.5	<b>82.5</b>	35.0	82.0	1.5	29.0	<b>79.8</b>
Year III	50.0	61.9	9.0	13.2	<b>54.5</b>	43.5	57.7	7.0	8.9	<b>50.9</b>	47.0	48.5	9.0	11.3	<b>42.5</b>
Year IV	49.5	33.6	13.0	8.8	<b>28.5</b>	48.5	32.7	12.0	12.0	<b>28.6</b>	51.5	26.3	12.0	11.2	<b>23.5</b>
Total:	141.0	65.4	24.0	12.6	<b>57.7</b>	132.0	62.4	20.0	11.4	<b>55.7</b>	142.0	56.5	23.0	13.7	<b>50.5</b>

**C. GRADUATE ENROLMENT**

	Full-Time	Part-Time	Graduate FTEs
	Nov.	Nov. x .3	
2006-07	75.0	1.2	<b>76.2</b>
2007-08	110.0	3.0	<b>113.0</b>
2008-09	114.0	2.7	<b>116.7</b>

**D. TOTAL FTE ENROLMENT**

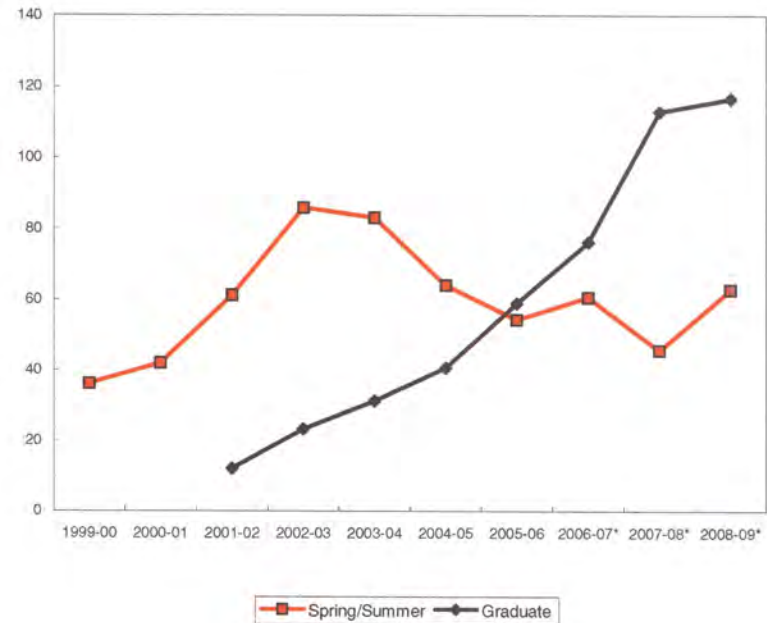
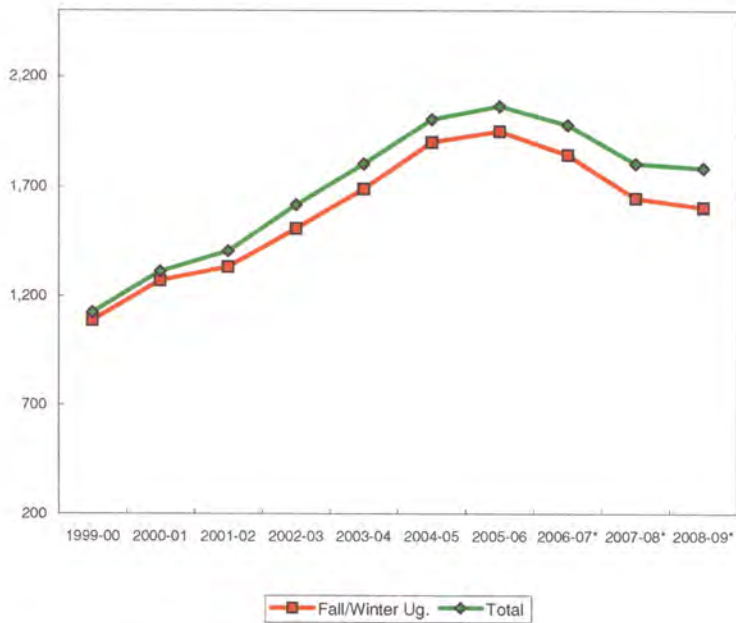
	UNDERGRADUATE FTEs (Course Enrolments/5)						GRADUATE FTEs		TOTAL	% Change from Prev. Year
	Fall/Winter		Spring/Summer		Sub-total		#	%		
	#	%	#	%	#	%				
2006-07	1,844.5	93.1%	60.6	3.1%	1,905.1	96.2%	76.2	3.8%	<b>1,981.3</b>	
2007-08	1,646.3	91.2%	45.6	2.5%	1,691.9	93.7%	113.0	6.3%	<b>1,804.9</b>	<b>-8.9%</b>
2008-09	1,604.8	89.9%	62.8	3.5%	1,667.6	93.5%	116.7	6.5%	<b>1,784.3</b>	<b>-1.1%</b>

**FTE Enrolment, 2008-09**

Level	FTEs	%
Year I	310.8	17.4%
Year II	582.4	32.6%
Year III	476.3	26.7%
Year IV	298.1	16.7%
<b>Undergraduate Sub-total</b>	<b>1,667.6</b>	<b>93.5%</b>
<b>Graduate Sub-total</b>	<b>116.7</b>	<b>6.5%</b>
<b>Grand Total</b>	<b>1,784.3</b>	<b>100.0%</b>

**FTE ENROLMENT**  
**Faculty of Applied Health Sciences**

YEAR	Undergraduate						Graduate		TOTAL FTEs	
	Fall/Winter	% Change	SP/SU	% Change	Total	% Change	#	% Change	#	% Change
1999-00	1,088.8		36.1		1,124.9				1,124.9	
2000-01	1,269.3	16.6%	42.0	16.3%	1,311.3	16.6%			1,311.3	16.6%
2001-02	1,332.9	5.0%	61.1	45.5%	1,394.0	6.3%	12.0		1,406.0	7.2%
2002-03	1,507.7	13.1%	85.9	40.6%	1,593.6	14.3%	23.2	0.7%	1,616.8	15.0%
2003-04	1,689.1	12.0%	83.1	-3.3%	1,772.2	11.2%	31.2	35.0%	1,803.4	11.5%
2004-05	1,901.4	12.6%	63.9	-23.1%	1,965.3	10.9%	40.6	28.5%	2,005.9	11.2%
2005-06	1,951.6	2.6%	54.3	-15.0%	2,005.9	2.1%	58.9	87.7%	2,064.8	2.9%
2006-07*	1,844.5	-5.5%	60.6	11.6%	1,905.1	-5.0%	76.2	0.0%	1,981.3	-4.0%
2007-08*	1,646.3	0.0%	45.6	0.0%	1,691.9	0.0%	113.0	48.3%	1,804.9	-8.9%
2008-09*	1,604.8	-2.5%	62.8	37.7%	1,667.6	-1.4%	116.7	3.3%	1,784.3	-1.1%
10 Yr. Ch.	516.0	47.4%	26.7	74.0%	542.7	48.2%	116.7	n/a	659.4	58.6%

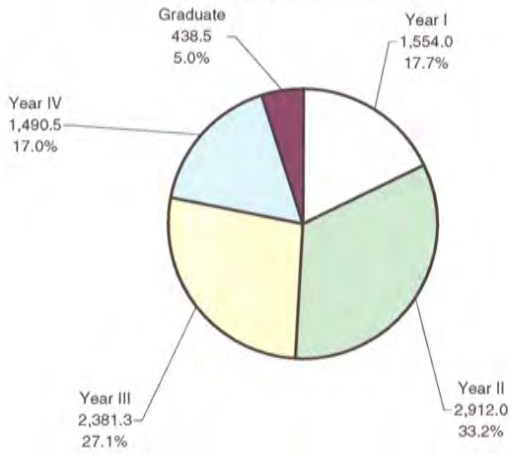


Note: Tourism Removed starting in 2006-07

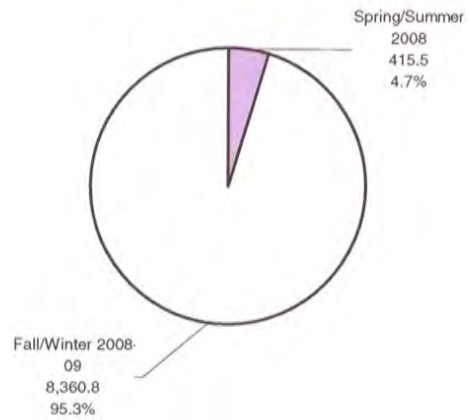
## Course FCEs and FCE Enrolments -- Faculty of Applied Health Sciences

Course Level	Spring/Summer 2008		Fall/Winter 2008-09				Total	
	FCEs	FCE Enrl.	FCEs	Nov.1 Reg.	Feb.1 Reg.	FCE Enrl.	FCEs	FCE Enrl.
Year I	0.5	34.5	8.5	1,211	1,828	1,519.5	9.0	1,554.0
Year II	1.5	43.5	35.0	2,907	2,830	2,868.5	36.5	2,912.0
Year III	9.0	101.5	47.0	2,284	2,294	2,279.8	56.0	2,381.3
Year IV	12.0	134.5	51.5	1,332	1,246	1,356.0	63.5	1,490.5
<b>Undergraduate</b>	<b>23.0</b>	<b>314.0</b>	<b>142.0</b>	<b>7,734</b>	<b>8,198</b>	<b>8,023.8</b>	<b>165.0</b>	<b>8,337.8</b>
<b>Graduate</b>	<b>2.0</b>	<b>101.5</b>	<b>14.0</b>	<b>239</b>	<b>201</b>	<b>337.0</b>	<b>16.0</b>	<b>438.5</b>
<b>Faculty of Applied Health Sciences Total</b>	<b>25.0</b>	<b>415.5</b>	<b>156.0</b>	<b>7,973</b>	<b>8,399</b>	<b>8,360.8</b>	<b>181.0</b>	<b>8,776.3</b>

FCE Course Enrolments by Level



FCE Course Enrolments by Session



**2008-09 COURSE ENROLMENT**

Course	Spring/Summer 2008		Fall/Winter 2008-09				Total	
	FCEs	FCE Enrolment	FCEs	Nov. 1 Regist.	Feb1 Regist.	FCE Enrolment	FCEs	FCE Enrolment
AHSC 5F90 0401	1.0	98.0	1.0	124		124.0	2.0	222.0
AHSC 5F90 0601			1.0		108	108.0	1.0	108.0
AHSC 5P00 0201			0.5	26		13.0	0.5	13.0
AHSC 5P00 0202			0.5	18		9.0	0.5	9.0
AHSC 5P03 0301			0.5		4	2.0	0.5	2.0
AHSC 5P07 0201			0.5	16		8.0	0.5	8.0
AHSC 5P07 0301			0.5		7	3.5	0.5	3.5
AHSC 5P17 0201			0.5	24		12.0	0.5	12.0
AHSC 5P27 0201			0.5	10		5.0	0.5	5.0
AHSC 5P30 0301			0.5		7	3.5	0.5	3.5
AHSC 5P31 0301			0.5		4	2.0	0.5	2.0
AHSC 5P40 0301			0.5		5	2.5	0.5	2.5
AHSC 5P50 0301			0.5		4	2.0	0.5	2.0
AHSC 5P60 0201	0.5	2.0	0.5	7		3.5	1.0	5.5
AHSC 5P60 0301			0.5		20	10.0	0.5	10.0
AHSC 5P61 0201	0.5	1.5	0.5	1		0.5	1.0	2.0
AHSC 5P61 0301			0.5		18	9.0	0.5	9.0
AHSC 5P61 0302			0.5		5	2.5	0.5	2.5
AHSC 5P90 0201			0.5	3		1.5	0.5	1.5
AHSC 5P96 0201			0.5	3		1.5	0.5	1.5
AHSC 5P97 0301			0.5		8	4.0	0.5	4.0
AHSC 5P98 0201			0.5	7		3.5	0.5	3.5
AHSC 5P99 0301			0.5		7	3.5	0.5	3.5
AHSC 7F90 0601			1.0		2	2.0	1.0	2.0
AHSC 7P60 0301			0.5		2	1.0	0.5	1.0
<b>FAHS Graduate Total</b>	<b>2.0</b>	<b>101.5</b>	<b>14.0</b>	<b>239</b>	<b>201</b>	<b>337.0</b>	<b>16.0</b>	<b>438.5</b>