

FULL-TIME EQUIVALENT (FTE) ENROLMENT: THREE-YEAR SUMMARY
Department: Marketing, International Business & Strategy
 (Data include ALL sections and ALL enrolment in ALL sessions)

A. UNDERGRADUATE COURSE ENROLMENTS

	2006-07					2007-08					2008-09				
	Fall/Winter			Spring/ Summer	All Sessions	Fall/Winter			Spring/ Summer	All Sessions	Fall/Winter			Spring/ Summer	All Sessions
	Nov. 1st	Feb. 1st	Sub-Total			Nov. 1st	Feb. 1st	Sub-Total			Nov. 1st	Feb. 1st	Sub-Total		
Year I	759	730	744.5	15.0	759.5	789	731	760.0		760.0	767	818	792.5		792.5
Year II	368	326	347.0	15.5	362.5	379	248	313.5	24.0	337.5	405	303	354.0	33.0	387.0
Year III	500	613	556.5	141.0	697.5	497	547	522.0	124.5	646.5	327	393	360.0	28.5	388.5
Year IV	505	587	546.0	58.5	604.5	528	508	518.0	41.0	559.0	516	563	539.5	36.0	575.5
Total	2,132	2,256	2,194.0	230.0	2,424.0	2,193	2,034	2,113.5	189.5	2,303.0	2,015	2,077	2,046.0	97.5	2,143.5

B. AVERAGE CLASS/SECTION SIZES

	Fall/Winter		Spring/Summer		Average All Sessions	Fall/Winter		Spring/Summer		Average All Sessions	Fall/Winter		Spring/Summer		Average All Sessions
	Sections	Ave.	Sections	Ave.		Sections	Ave.	Sections	Ave.		Sections	Ave.	Sections	Ave.	
Year I	9.5	78.4	0.5		76.0	9.5	80.0			80.0	10.0	79.3			79.3
Year II	7.0	49.6	0.5	31.0	48.3	5.0	62.7	0.5	48.0	61.4	5.5	64.4	0.5	66.0	64.5
Year III	11.0	50.6	1.5	94.0	55.8	10.5	49.7	1.5	83.0	53.9	9.5	37.9	1.0	28.5	37.0
Year IV	14.5	37.7	2.5	23.4	44.7	15.5	33.4	1.0	41.0	46.1	14.0	38.5	1.0	36.0	52.8
Total:	42.0	52.2	5.0	46.0	51.6	40.5	52.2	3.0	63.2	52.9	39.0	52.5	2.5	39.0	51.7

C. GRADUATE ENROLMENT

	Full-Time	Part-Time	Graduate FTEs
	Nov.	Nov. x .3	
2006-07			
2007-08			
2008-09			

D. TOTAL FTE ENROLMENT

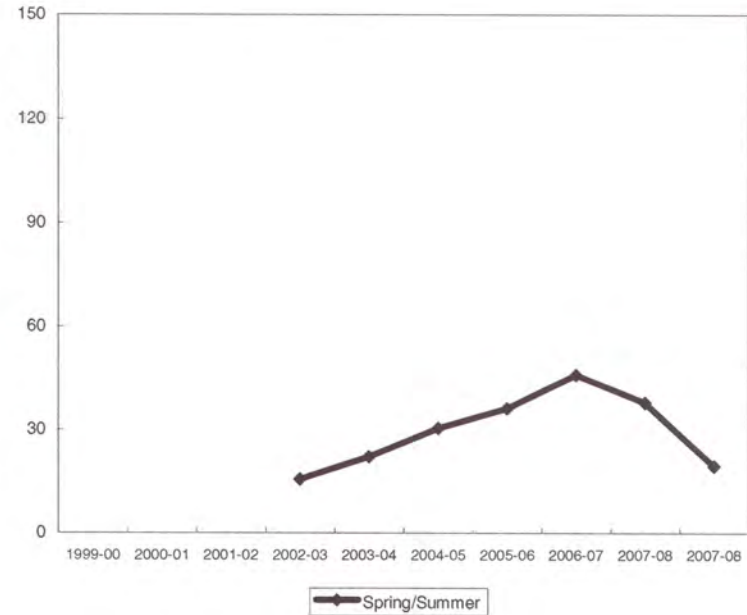
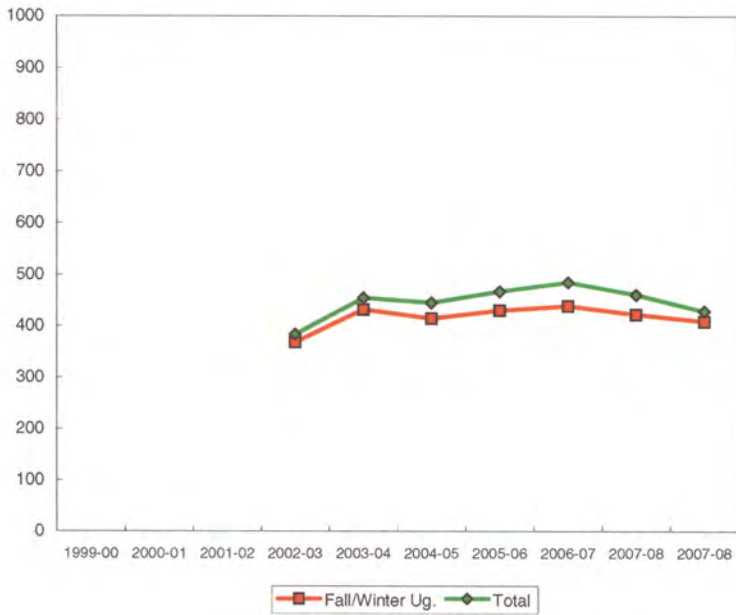
	UNDERGRADUATE FTEs (Course Enrolments/5)						GRADUATE FTEs		TOTAL	% Change from Prev. Year
	Fall/Winter		Spring/Summer		Sub-total		#	%		
	#	%	#	%	#	%				
2006-07	438.8	90.5%	46.0	9.5%	484.8	100.0%			484.8	
2007-08	422.7	91.8%	37.9	8.2%	460.6	100.0%			460.6	-5.0%
2008-09	409.2	95.5%	19.5	4.5%	428.7	100.0%			428.7	-6.9%

FTE Enrolment, 2008-09

Level	FTEs	%
Year I	158.5	37.0%
Year II	77.4	18.1%
Year III	77.7	18.1%
Year IV	115.1	26.8%
<i>Undergraduate Sub-total</i>	428.7	100.0%
<i>Graduate Sub-total</i>	0.0	0.0%
Grand Total	428.7	100.0%

FTE ENROLMENT
Marketing, International Business and Strategy

YEAR	Undergraduate						Graduate		TOTAL FTEs	
	Fall/Winter	% Change	SP/SU	% Change	Total	% Change	#	% Change	#	% Change
1999-00										
2000-01										
2001-02										
2002-03	368.6		15.7		384.3				384.3	
2003-04	432.0	17.2%	22.1	40.8%	454.1	18.2%			454.1	18.2%
2004-05	414.6	-4.0%	30.5	38.0%	445.1	-2.0%			445.1	-2.0%
2005-06	430.3	3.8%	36.2	18.7%	466.5	4.8%			466.5	4.8%
2006-07	438.8	2.0%	46.0	27.1%	484.8	3.9%			484.8	3.9%
2007-08	422.7	-3.7%	37.9	-17.6%	460.6	-5.0%			460.6	-5.0%
2008-09	409.2	-3.2%	19.5	-48.5%	428.7	-6.9%			428.7	-6.9%
10 Yr. Ch.	409.2	n/a	19.5	n/a	428.7	n/a			428.7	n/a



2008-09 COURSE ENROLMENT

Course	Spring/Summer 2008		Fall/Winter 2008-09				Total	
	FCEs	FCE Enrolment	FCEs	Nov. 1 Regist.	Feb1 Regist.	FCE Enrolment	FCEs	FCE Enrolment
MGMT 1P51 0201			0.5	117		58.5	0.5	58.5
MGMT 1P51 0202			0.5	119		59.5	0.5	59.5
MGMT 1P51 0301			0.5		118	59.0	0.5	59.0
MGMT 1P51 0302			0.5		49	24.5	0.5	24.5
MGMT 1P52 0201			0.5	113		56.5	0.5	56.5
MGMT 1P52 0301			0.5		118	59.0	0.5	59.0
MGMT 1P52 0302			0.5		136	68.0	0.5	68.0
MGMT 1P93 0201			0.5	165		82.5	0.5	82.5
MGMT 1P93 0202			0.5	170		85.0	0.5	85.0
MGMT 1P93 0301			0.5		66	33.0	0.5	33.0
MGMT 1P96 0201			0.5	43		21.5	0.5	21.5
MGMT 1P96 0202			0.5	40		20.0	0.5	20.0
MGMT 1P96 0301			0.5		43	21.5	0.5	21.5
MGMT 1P96 0302			0.5		31	15.5	0.5	15.5
MGMT 1P96 0303			0.5		45	22.5	0.5	22.5
MGMT 1P96 0304			0.5		45	22.5	0.5	22.5
MGMT 1P96 0305			0.5		45	22.5	0.5	22.5
MGMT 1P96 0306			0.5		39	19.5	0.5	19.5
MGMT 1P96 0307			0.5		42	21.0	0.5	21.0
MGMT 1P96 0308			0.5		41	20.5	0.5	20.5
Year I Total	0.0	0.0	10.0	767	818	792.5	10.0	792.5
MKTG 2P51 0201			0.5	60		30.0	0.5	30.0
MKTG 2P51 0202			0.5	68		34.0	0.5	34.0
MKTG 2P52 0301			0.5		72	36.0	0.5	36.0
MKTG 2P91 0201	0.5	33.0	0.5	72		36.0	1.0	69.0
MKTG 2P91 0202			0.5	72		36.0	0.5	36.0
MKTG 2P91 0203			0.5	71		35.5	0.5	35.5
MKTG 2P91 0204			0.5	62		31.0	0.5	31.0
MKTG 2P91 0301			0.5		65	32.5	0.5	32.5
MKTG 2P91 0302			0.5		70	35.0	0.5	35.0
MKTG 2P91 0303			0.5		70	35.0	0.5	35.0
MKTG 2P91 0304			0.5		26	13.0	0.5	13.0
Year II Total	0.5	33.0	5.5	405	303	354.0	6.0	387.0
MGMT 3P51 0301			0.5		10	5.0	0.5	5.0
MGMT 3P98 0201	0.5	11.5	0.5	38		19.0	1.0	30.5
MGMT 3P98 0202			0.5	43		21.5	0.5	21.5
MGMT 3P98 0203			0.5	32		16.0	0.5	16.0
MGMT 3P98 0204			0.5	37		18.5	0.5	18.5
MGMT 3P98 0301			0.5		46	23.0	0.5	23.0
MGMT 3P98 0303			0.5		45	22.5	0.5	22.5
MGMT 3P98 0304			0.5		44	22.0	0.5	22.0
MGMT 3P98 0305			0.5		40	20.0	0.5	20.0
MKTG 3P24 0201	0.5	17.0	0.5	32		16.0	1.0	33.0
MKTG 3P24 0202			0.5	40		20.0	0.5	20.0
MKTG 3P24 0203			0.5	39		19.5	0.5	19.5
MKTG 3P24 0204			0.5	42		21.0	0.5	21.0
MKTG 3P24 0301			0.5		45	22.5	0.5	22.5
MKTG 3P24 0302			0.5		42	21.0	0.5	21.0
MKTG 3P24 0303			0.5		44	22.0	0.5	22.0
MKTG 3P96 0201			0.5	24		12.0	0.5	12.0
MKTG 3P96 0301			0.5		44	22.0	0.5	22.0
MKTG 3P96 0302			0.5		33	16.5	0.5	16.5
Year III Total	1.0	28.5	9.5	327	393	360.0	10.5	388.5

2008-09 COURSE ENROLMENT

Course	Spring/Summer 2008		Fall/Winter 2008-09				Total	
	FCEs	FCE Enrolment	FCEs	Nov. 1 Regist.	Feb1 Regist.	FCE Enrolment	FCEs	FCE Enrolment
MGMT 4P35 0201			0.5	44		22.0	0.5	22.0
MGMT 4P90 0201	0.5	16.5	0.5	44		22.0	1.0	38.5
MGMT 4P90 0202	0.5	19.5	0.5	44		22.0	1.0	41.5
MGMT 4P90 0203			0.5	43		21.5	0.5	21.5
MGMT 4P90 0204			0.5	40		20.0	0.5	20.0
MGMT 4P90 0301			0.5		38	19.0	0.5	19.0
MGMT 4P90 0302			0.5		38	19.0	0.5	19.0
MGMT 4P90 0303			0.5		42	21.0	0.5	21.0
MGMT 4P90 0304			0.5		45	22.5	0.5	22.5
MGMT 4P90 0305			0.5		35	17.5	0.5	17.5
MGMT 4P94 0301			0.5		45	22.5	0.5	22.5
MKTG 4P23 0201			0.5	41		20.5	0.5	20.5
MKTG 4P23 0301			0.5		45	22.5	0.5	22.5
MKTG 4P25 0201			0.5	41		20.5	0.5	20.5
MKTG 4P25 0301			0.5		45	22.5	0.5	22.5
MKTG 4P26 0301			0.5		41	20.5	0.5	20.5
MKTG 4P28 0201			0.5	44		22.0	0.5	22.0
MKTG 4P29 0301			0.5		42	21.0	0.5	21.0
MKTG 4P31 0201			0.5	44		22.0	0.5	22.0
MKTG 4P31 0301			0.5		28	14.0	0.5	14.0
MKTG 4P31 0302			0.5		37	18.5	0.5	18.5
MKTG 4P33 0301			0.5		28	14.0	0.5	14.0
MKTG 4P34 0201			0.5	32		16.0	0.5	16.0
MKTG 4P36 0301			0.5		10	5.0	0.5	5.0
MKTG 4P93 0201			0.5	46		23.0	0.5	23.0
MKTG 4P94 0301			0.5		44	22.0	0.5	22.0
MKTG 4P95 0201			0.5	42		21.0	0.5	21.0
MKTG 4P98 0201			0.5	11		5.5	0.5	5.5
Year IV Total	1.0	36.0	14.0	516	563	539.5	15.0	575.5
Undergraduate Total	2.5	97.5	39.0	2,015	2,077	2,046.0	41.5	2,143.5
MSCM 5P02 0301			0.5		10	5.0	0.5	5.0
MSCM 5P61 0202			0.5	3		1.5	0.5	1.5
MSCM 5P62 0302			0.5		3	1.5	0.5	1.5
MSCM 5P65 0202			0.5	3		1.5	0.5	1.5
MBAB 5P05 0301			0.5		21	10.5	0.5	10.5
MBAB 5P05 0302			0.5		24	12.0	0.5	12.0
MBAB 5P05 0303			0.5		21	10.5	0.5	10.5
MBAB 5P21 0201			0.5	22		11.0	0.5	11.0
MBAB 5P21 0202			0.5	22		11.0	0.5	11.0
MBAB 5P21 0301			0.5		31	15.5	0.5	15.5
MBAB 5P22 0301			0.5		23	11.5	0.5	11.5
MBAB 5P22 0302			0.5		21	10.5	0.5	10.5
MBAB 5P22 0303			0.5		28	14.0	0.5	14.0
MBAB 5P61 0201			0.5	15		7.5	0.5	7.5
MBAB 5P61 0202			0.5	14		7.0	0.5	7.0
MBAB 5P62 0201			0.5	14		7.0	0.5	7.0
MBAB 5P62 0301			0.5		8	4.0	0.5	4.0
MBAB 5P63 0201			0.5	14		7.0	0.5	7.0
MBAB 5P64 0201	0.5	8.5	0.5	12		6.0	1.0	14.5
MBAB 5P65 0201			0.5	17		8.5	0.5	8.5
MBAB 5P65 0301			0.5		16	8.0	0.5	8.0
MBAB 5P67 0201			0.5	14		7.0	0.5	7.0
MBAB 5P68 0201	0.5	7.5					0.5	7.5
MBAB 5P68 0202	0.5	7.0					0.5	7.0
Graduate Total	1.5	23.0	11.0	150	206	178.0	12.5	201.0
MIBS Total	4.0	120.5	50.0	2,165	2,283	2,224.0	54.0	2,344.5