

FULL-TIME EQUIVALENT (FTE) ENROLMENT: THREE-YEAR SUMMARY

Department: Chemistry

(Data include ALL sections and ALL enrolment in ALL sessions)

A. UNDERGRADUATE COURSE ENROLMENTS

	2005-06					2006-07					2007-08				
	Fall/Winter			Spring/ Summer	All Sessions	Fall/Winter			Spring/ Summer	All Sessions	Fall/Winter			Spring/ Summer	All Sessions
	Nov. 1st	Feb. 1st	Sub-Total			Nov. 1st	Feb. 1st	Sub-Total			Nov. 1st	Feb. 1st	Sub-Total		
Year I	740	778	759.0	1.0	760.0	722	795	758.5		758.5	779	853	816.0		816.0
Year II	279	238	258.5	15.5	274.0	195	163	179.0	16.5	195.5	206	163	184.5	16.0	200.5
Year III	116	91	103.5		103.5	125	112	118.5	0.5	119.0	106	89	97.5	1.0	98.5
Year IV	29.0	30.0	31.0	3.0	34.0	45	66	47.5	7.0	54.5	54	47	52.5	12.5	65.0
Total	1,164.0	1,137.0	1,152.0	19.5	1,171.5	1,087.0	1,136.0	1,103.5	24.0	1,127.5	1,145.0	1,152.0	1,150.5	29.5	1,180.0

B. AVERAGE CLASS/SECTION SIZES

	Fall/Winter		Spring/Summer		Average All Sessions	Fall/Winter		Spring/Summer		Average All Sessions	Fall/Winter		Spring/Summer		Average All Sessions
	Sections	Ave.	Sections	Ave.		Sections	Ave.	Sections	Ave.		Sections	Ave.	Sections	Ave.	
Year I	4.0	189.8	1.0	1.0	152.0	4.0	189.6			189.6	4.0	204.0			204.0
Year II	3.5	73.9	0.5	31.0	68.5	3.5	51.1	0.5	33.0	48.9	4.0	46.1	0.5	32.0	44.6
Year III	6.5	15.9			15.9	7.0	16.9	0.5	1.0	15.9	6.5	15.0	0.5	2.0	14.1
Year IV	8.5	3.6	3.0	1.0	3.0	6.5	7.3	2.5	2.8	6.1	11.0	4.8	3.5	3.6	4.5
Total:	22.5	51.2	4.5	4.3	43.4	21.0	52.5	3.5	6.9	46.0	25.5	45.1	4.5	6.6	39.3

C. GRADUATE ENROLMENT

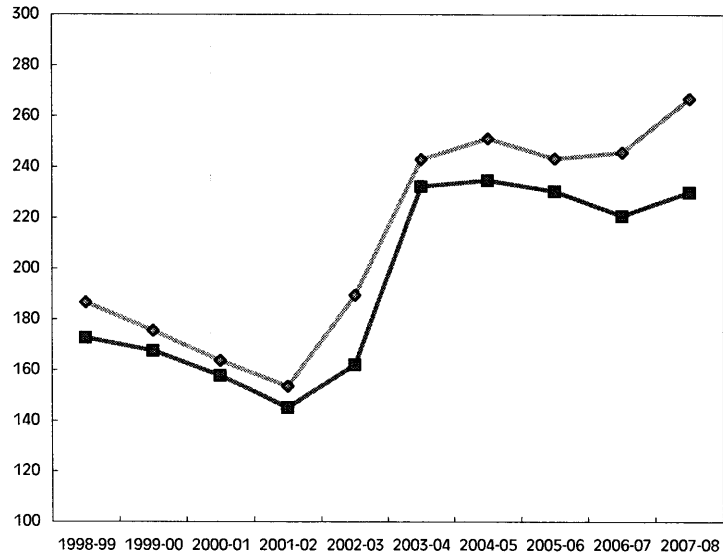
	Full-Time	Part-Time	Graduate FTEs
	Nov.	Nov. x .3	
2005-06	9	0.0	9.0
2006-07	20	0.2	20.2
2007-08	30.5	0.3	30.8

D. TOTAL FTE ENROLMENT

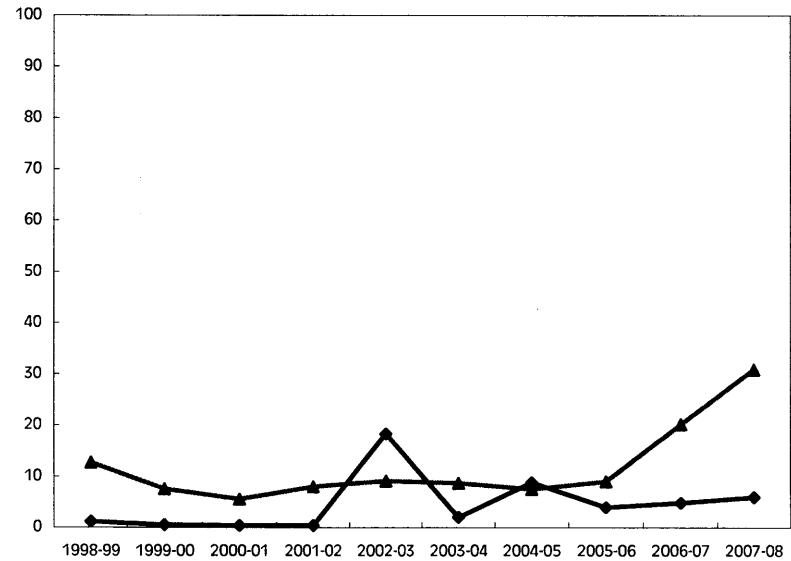
	UNDERGRADUATE FTEs (Course Enrolments/5)						GRADUATE		TOTAL	% Change from Prev. Year
	Fall/Winter		Spring/Summer		Sub-total		#	%		
	#	%	#	%	#	%				
2005-06	230.4	94.7%	3.9	1.6%	234.3	96.3%	9.0	3.7%	243.3	
2006-07	220.7	89.8%	4.8	2.0%	225.5	91.8%	20.2	8.2%	245.7	1.0%
2007-08	230.1	86.2%	5.9	2.2%	236.0	88.5%	30.8	11.5%	266.8	8.6%

**FTE ENROLMENT
Chemistry**

YEAR	Undergraduate				Graduate		TOTAL FTEs		
	Fall/Winter % Change	SES/SDS	% Change	Total	% Change	#	% Change	#	% Change
1998-99	172.8	1.1		173.9		12.7		186.5	
1999-00	167.5	0.5	-54.5%	168.0	-3.4%	7.5	-40.6%	175.5	-5.9%
2000-01	157.7	0.4	-20.0%	158.1	-5.9%	5.5	-26.6%	163.6	-6.8%
2001-02	145.1	0.4	0.0%	145.5	-8.0%	8.0	44.1%	153.5	-6.2%
2002-03	162.0	18.3	n/a	180.3	23.9%	9.1	14.2%	189.4	23.4%
2003-04	232.3	2.0	-89.1%	234.3	30.0%	8.7	-4.7%	243.0	28.3%
2004-05	234.8	8.8	340.0%	243.6	4.0%	7.5	-13.5%	251.1	3.3%
2005-06	230.4	3.9	-55.7%	234.3	-3.8%	9.0	20.0%	243.3	-3.1%
2006-07	220.7	4.8	23.1%	225.5	-3.8%	20.2	123.9%	245.7	1.0%
2007-08	230.1	5.9	22.9%	236.0	4.7%	30.8	52.9%	266.8	8.6%
10 Yr. Ch.	57.4	4.8	436.4%	62.2	35.7%	18.1	143.1%	80.3	43.0%



■ Fall/Winter ug. ◆ Total



◆ SES/SDS ▲ Graduate

2007-08 COURSE ENROLMENT

Course	Spring/Summer 2007		Fall/Winter 2007-08				Total	
	FCEs	FCE Enrl.	FCEs	Nov.1	Feb.1	Final	FCEs	FCE Enrl.
CHEM 1F92 0101			1.0	386	365	375.5	1.0	375.5
CHEM 1P00 0301			0.5		115	57.5	0.5	57.5
CHEM 1P90 0201			0.5	2		1.0	0.5	1.0
SCIE 1F30 0101			1.0	313	299	306.0	1.0	306.0
SCIE 1F30 0102			1.0	78	74	76.0	1.0	76.0
Year I Total			4.0	779	853	816.0	4.0	816.0
CHEM 2P12 0301			0.5		28	14.0	0.5	14.0
CHEM 2P20 0201	0.5	16.0	0.5	115		57.5	1.0	73.5
CHEM 2P21 0301			0.5		79	39.5	0.5	39.5
CHEM 2P32 0301			0.5		53	26.5	0.5	26.5
CHEM 2P42 0201			0.5	46		23.0	0.5	23.0
CHEM 2P63 0201 + BTEC			0.5	43		21.5	0.5	21.5
CHEM 2P98 0201			0.5	2		1.0	0.5	1.0
CHEM 2P98 0301			0.5		3	1.5	0.5	1.5
Year II Total	0.5	16.0	4.0	206	163	184.5	4.5	200.5
BTEC 3P09 0201			0.5	13		6.5	0.5	6.5
CHEM 3P20 0201			0.5	38		19.0	0.5	19.0
CHEM 3P21 0301			0.5		25	12.5	0.5	12.5
CHEM 3P30 0201			0.5	9		4.5	0.5	4.5
CHEM 3P31 0301			0.5		5	2.5	0.5	2.5
CHEM 3P40 0201			0.5	37		18.5	0.5	18.5
CHEM 3P41 0301			0.5		14	7.0	0.5	7.0
CHEM 3P51 0201			0.5	9		4.5	0.5	4.5
CHEM 3P53 0301			0.5		6	3.0	0.5	3.0
CHEM 3P60 0301			0.5		9	4.5	0.5	4.5
CHEM 3P62 0301 + BTEC			0.5		22	11.0	0.5	11.0
CHEM 3P93 0301 + BTEC			0.5		5	2.5	0.5	2.5
CHEM 3P98 0301	0.5	1.0	0.5		3	1.5	1.0	2.5
Year III Total	0.5	1.0	6.5	106	89	97.5	7.0	98.5
BTEC 4F90 0101	0.5	3.0	0.5	5	4	4.3	1.0	7.3
BTEC 4F90 0401			0.5		1	1.0	0.5	1.0
BTEC 4F91 0101	0.5	3.0	0.5	5	4	4.3	1.0	7.3
BTEC 4F91 0401			0.5		1	1.0	0.5	1.0
CHEM 4F90 0101	1.0	3.0	1.0	3	2	2.5	2.0	5.5
CHEM 4F90 0401			1.0		1	1.0	1.0	1.0
CHEM 4F91 0101	1.0	3.0	1.0	3	2	2.5	2.0	5.5
CHEM 4F91 0401			1.0		1	1.0	1.0	1.0
CHEM 4P14 0301			0.5		1	0.5	0.5	0.5
CHEM 4P18 0201 + BTEC			0.5	13		6.5	0.5	6.5
CHEM 4P21 0201			0.5	7		3.5	0.5	3.5
CHEM 4P22 0301			0.5		4	2.0	0.5	2.0
CHEM 4P23 0301			0.5		3	1.5	0.5	1.5
CHEM 4P27 0301 + BTEC			0.5		20	10.0	0.5	10.0
CHEM 4P32 0301			0.5		1	0.5	0.5	0.5
CHEM 4P41 0301			0.5		2	1.0	0.5	1.0
CHEM 4P61 0201			0.5	7		3.5	0.5	3.5
CHEM 4P67 0201 + BTEC			0.5	12		6.0	0.5	6.0
CHEM 4P92 0401	0.5	0.5					0.5	0.5
Year IV Total	3.5	12.5	11.0	54	47	52.5	14.5	65.0
Undergraduate Total	4.5	29.5	25.5	1,145	1,152	1,150.5	30.0	1,180.0

2007-08 COURSE ENROLMENT

Course	Spring/Summer 2007		Fall/Winter 2007-08			Total		
	FCEs	FCE Enrl.	FCEs	Nov.1	Feb.1	Final	FCEs	FCE Enrl.
BTEC 5F90 0201	0.5	6.0	0.5	8		7.5	1.0	13.5
BTEC 5F90 0301			0.5		8	8.0	0.5	8.0
BTEC 5P95 0201	0.3	1.8	0.3	5		2.3	0.5	4.0
BTEC 5P95 0301			0.3		5	2.5	0.3	2.5
CHEM 5F90 0201	1.0	10.0	1.0	14		14.0	2.0	24.0
CHEM 5F90 0301			1.0		12	12.0	1.0	12.0
CHEM 5P00 0201			0.5	1		0.5	0.5	0.5
CHEM 5P13 0301			0.5		3	1.5	0.5	1.5
CHEM 5P14 0301 + BTEC			0.5		4	2.0	0.5	2.0
CHEM 5P20 0201			0.5	2		1.0	0.5	1.0
CHEM 5P21 0301			0.5		6	3.0	0.5	3.0
CHEM 5P25 0201 + BTEC			0.5	2		1.0	0.5	1.0
CHEM 5P27 0301 + BTEC			0.5		4	2.0	0.5	2.0
CHEM 5P28 0201 + BTEC			0.5	5		2.5	0.5	2.5
CHEM 5P31 0301			0.5		4	2.0	0.5	2.0
CHEM 5P32 0301			0.5		3	1.5	0.5	1.5
CHEM 5P33 0201			0.5	3		1.5	0.5	1.5
CHEM 5P40 0201			0.5	3		1.5	0.5	1.5
CHEM 5P41 0201			0.5	2		1.0	0.5	1.0
CHEM 5P44 0201			0.5	2		1.0	0.5	1.0
CHEM 5P44 0301			0.5		2	1.0	0.5	1.0
CHEM 5P95 0201			0.5	11		5.5	0.5	5.5
CHEM 5P95 0301	0.5	0.5	0.5		13	6.5	1.0	7.0
BTEC 7F90 0401	0.5	0.5					0.5	0.5
BTEC 7F99 0201	0.5	3.5	0.5	7		7.0	1.0	10.5
BTEC 7F99 0302			0.5		7	7.0	0.5	7.0
BTEC 7P96 0201	0.3	1.8	0.3	5		2.5	0.5	4.3
BTEC 7P96 0301			0.3		3	1.3	0.3	1.3
CHEM 7F90 0201	1.0	5.0	1.0	10		10.0	2.0	15.0
CHEM 7F90 0301			1.0		14	14.0	1.0	14.0
CHEM 7P95 0201			0.5	6		3.0	0.5	3.0
CHEM 7P95 0301			0.5		10	5.0	0.5	5.0
Graduate Total	4.5	29.0	16.5	85	98	131.0	21.0	160.0
Chemistry Total	9.0	58.5	42.0	1,230	1,250	1,281.5	51.0	1,340.0